



Encl. 9-14  
MOHICAN I-100

Datum elevation: 29.9 m aMSL  
X-coordinate: 542314.4  
Y-coordinate: 4760084.0  
TD (ft MD): 4393.0  
Drilled in: 1972 (Shell)

Scale 1:4000  
UWI: I-100 Well: MOHICAN I-100



PLAY FAIRWAY ANALYSIS  
OFFSHORE NOVA SCOTIA - CANADA  
June 2011

Seismic Interpretation  
based on reflectivity  
(no reflectivity log  
available for this well)

Petrophysical  
Evaluation

Samples

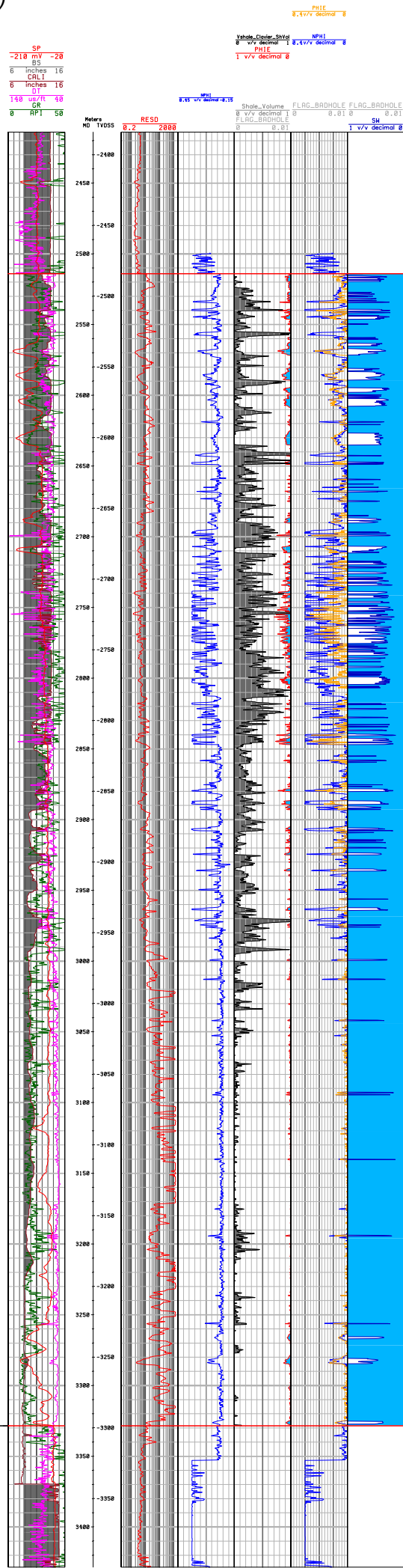
Sedimentological Data  
(no quantitative chart available, see Eliuk, 1978 for descriptions)

Stratigraphic Breakdown

Seismic horizon  
J150

Seismic horizon  
Bac-4  
Seismic horizon  
Bac-3

Seismic horizon  
Bac-2/1



PETROPHYSICAL EVALUATION

- Sandstone
- Claystone
- Limestone
- Dolomite
- Porosity

FACIES ASSOCIATIONS

- G1 - Shallow-water siliciclastics (delta to prodelta)
- G2 - Muddy (lagoon) platform interior
- F - Mixed carbonate-siliciclastic platform interior
- E - High-energy oolitic sand shoals
- D - "Clear" shallow-water coralgal reef margin
- C1 - "Turbid" shallow-water sponge reef mounds
- C - Proximal foreslope
- B - Distal foreslope
- A - Deep marine shelf

SEQUENCE STRATIGRAPHIC BREAKDOWN

- MFS - Maximum Flooding Surface
- SB - Sequence Boundary
- Base-level rise
- Base-level fall